

PowerLight Pty Ltd

REC 6156

PROJECT NAME *Residential Development,
109 Clarendon St, South Melbourne.*

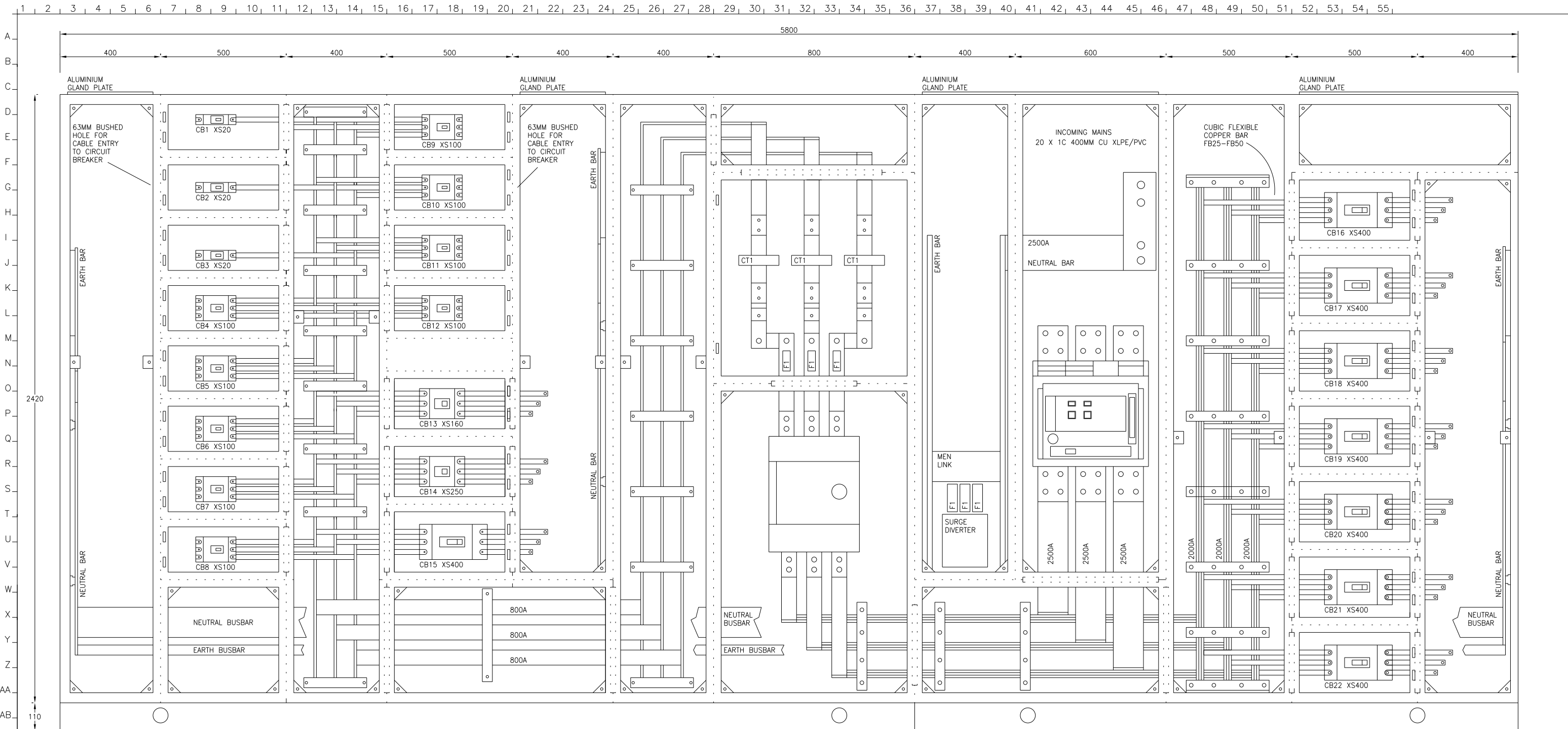
PROJECT No *P4448*

DRAWING No's *P4448-1 & 4*

CLIENTS *Built Pty Ltd.*

CONSULTANT *Lincoln Scott.*

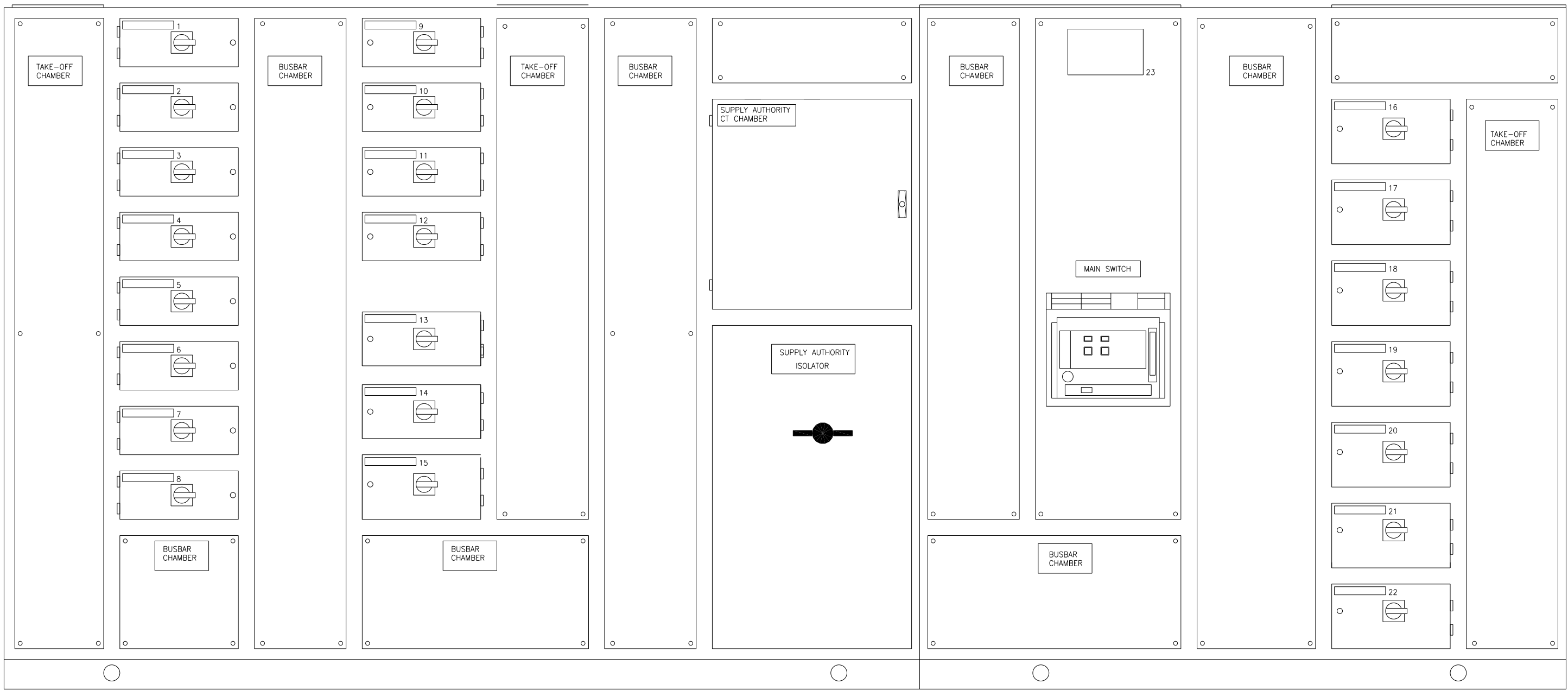
*SWITCHBOARD
MANUFACTURER* *Powerlight Pty Ltd.*



Rev	Revisions	Date	PowerLight Pty Ltd REC 6156		
G			Electrical Contractors		
F					
E			PROJECT TITLE Residential Development, 109 Clarendon St, South Melbourne.		
D			Designed By Ian Hoyle	Project No P4448	MSB
C			Draw By Ian Hoyle	Drawing No P4448-1	Scale NTS
B	As installed	17/02/2010	Checked By F O'Shannassy	Sheet No 1 OF 4	Rev B
A	Submit for approval	12/05/2008			

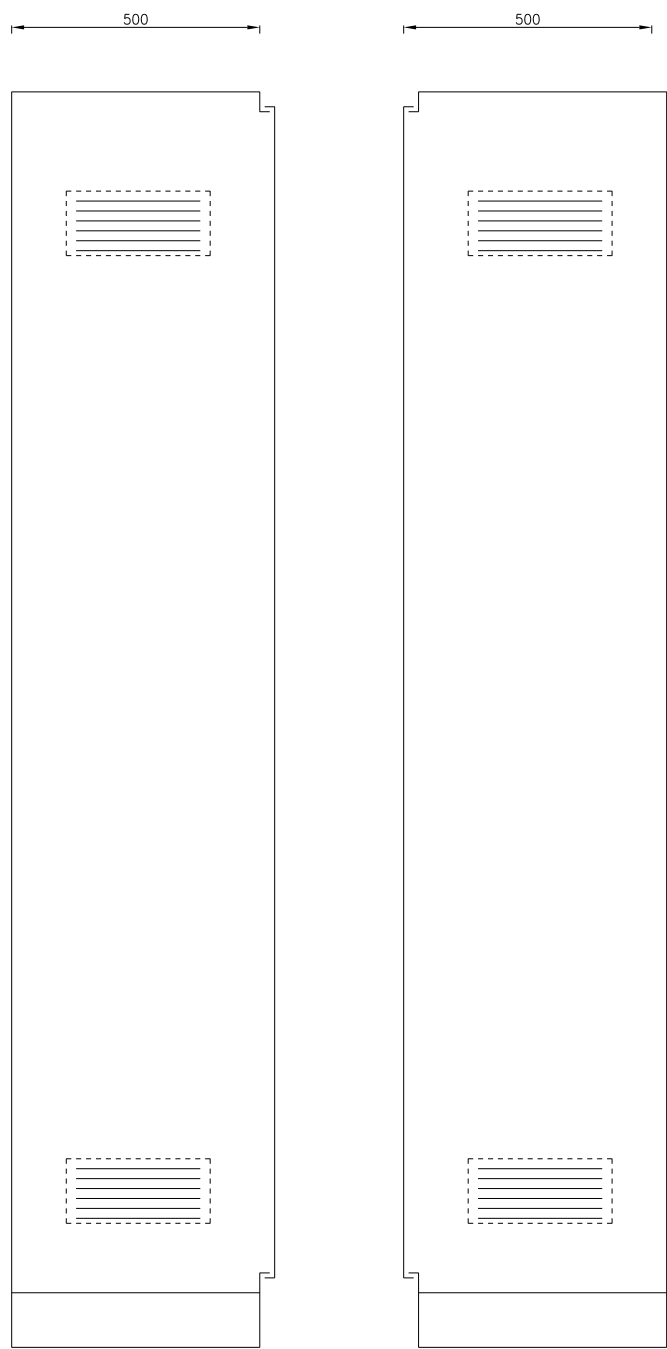
1 2 3 4 5 6 7 8 9 10 11 12 13 14 15 16 17 18 19 20 21 22 23 24 25 26 27 28 29 30 31 32 33 34 35 36 37 38 39 40 41 42 43 44 45 46 47 48 49 50 51 52 53 54 55 56 57 58 59 60 61 62

A
B
C
D
E
F
G
H
I
J
K
L
M
N
O
P
Q
R
S
T
U
V
W
X
Y
Z
AA
AB
AC
AD
AE
AF
AG
AH
AI
AJ
AK
AL



Rev	Revisions	Date	PowerLight Pty Ltd REC 6156 Electrical Contractors		
G					
F					
E			PROJECT TITLE Residential Development, 109 Clarendon St, South Melbourne.		
D			Designed By Ian Hoyle	Project No P4448	MSB
C			Draw By Ian Hoyle	Drawing No P4448-2	Scale NTS
B	As installed	17/02/2010	Checked By F O'Shannassy	Sheet No 2 OF 4	Rev B
A	Submit for approval	12/05/2008			

CIRCUIT BREAKER LABEL DESIGNATION



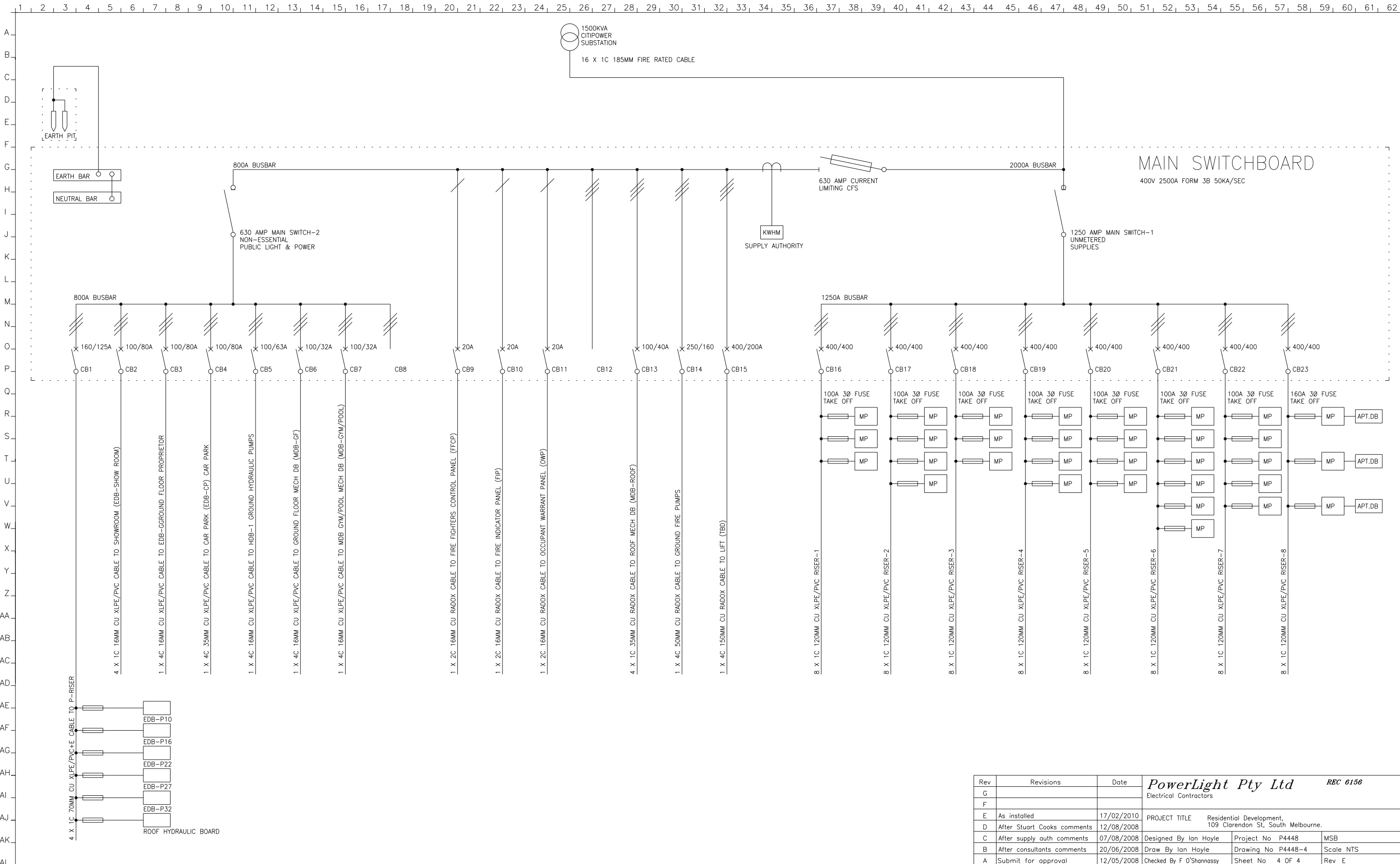
- | | | |
|--------------------|------------------|-----------------|
| CB1 P-RISER 1 | CB9 FFCP 9 | CB16 RISER-1 16 |
| CB2 EDB SHOWROOM 2 | CB10 FIP 10 | CB17 RISER-2 17 |
| CB3 EDB-G 3 | CB11 OWP 11 | CB18 RISER-3 18 |
| CB4 HDB-1 4 | CB12 SPARE 12 | CB19 RISER-4 19 |
| CB5 HDB-1 5 | CB13 MDB-ROOF 13 | CB20 RISER-5 20 |
| CB6 MDB-GF 6 | CB14 FDH 14 | CB21 RISER-6 21 |
| CB7 MDB-GYM/POOL 7 | CB15 TDB 15 | CB22 RISER-7 22 |
| CB8 SPARE 8 | | CB23 RISER-8 23 |

MANUFACTURER: POWERLIGHT PTY. LTD.
PHONE No 9555 9966 FAX No 9555 9699
INSTALLED BY POWERLIGHT PTY. LTD.
BUILT TO AS 3439.1-2002 FORM 3b
FAULT RATING 36KA
415 VOLT 50 Hz 2500 AMPS IP 56
DATE OF MANUFACTURE 2008

CUBICLE DETAILS	
CONSTRUCTION	2MM MILD STEEL SHEETS
CUBICLE COLOURS	EXTERNAL---- ORANGE X15
POWDER COAT	INTERNAL---- ORANGE X15
EQUIPMENT PANEL COLOR	WHITE X N41
DOOR LOCKS	T-BAR CLO01 LOCKS
LABELS (TRAFFOLYTE)	WHITE WITH BLACK LETTERS
	LABELS PINNED TO CABLE DUCT
PROVIDE CB SCHEDULE HOLDER	TO POWERLIGHT DRG NO 20
PROVIDE DOCUMENT HOLDER	TO POWERLIGHT DRG NO 21
PROVIDE DUST PROOF DOOR SEALS	
MAIN SWITCHBOARD FORM OF SEGREGATION	
FORM OF SEGREGATION	FORM 3B
IP RATING	IP54
FAULT RATING	36KA
CABLE COLOUR CODE	
415V POWER	RED-WHITE-BLUE
240V CONTROL	WHITE-BLACK
CABLE SIZING	
POWER WIRING	2.5MM MIN
ALL OTHER WIRING TO	AS3000/AS3008.1

EQUIPMENT DETAILS		
EQUIPMENT	MAKE	MODEL-TYPE
MAIN SWITCH	TERASAKI	TEMPOWER 2 AR325S
SUPPLY AUTHORITY ISOLATOR	SOCOMEK	SLB800 3P
CB 1,2,3	TERASAKI	XS125CJ 20-1
CB 4,5,6,7,8,9,10,11	TERASAKI	XS125CJ 100-3
CB 13	TERASAKI	XS160PJ 160-3
CB 14	TERASAKI	XS250NJ 250-3
CB 15,16,17,18,19,20,21,22,23	TERASAKI	XS400CJ 400-3
CB HANDLE OPERATOR	TERASAKI	TFJ21PB
CB TERM COVERS	TERASAKI	2H1080CAA
FLEXIBLE COPPER BAR	CUBIC	FB25 TO FB50
CURRENT TRANSFORMERS	CIRCUTOR	WK-150X350
SURGE DIVERTER	NHP	DR4P45K4000DC

Rev	Revisions	Date	PowerLight Pty Ltd <i>REC 6156</i> Electrical Contractors		
G					
F					
E					
D			PROJECT TITLE Residential Development, 109 Clarendon St, South Melbourne.		
C	As installed	17/02/2010	Designed By Ian Hoyle	Project No P4448	MSB
B	After consultants comments	20/06/2008	Draw By Ian Hoyle	Drawing No P4448-3	Scale NTS
A	Submit for approval	12/05/2008	Checked By F O'Shannassy	Sheet No 3 OF 4	Rev C



MAIN SWITCHBOARD
400V 2500A FORM 3B 50KA/SEC

Rev	Revisions	Date	PowerLight Pty Ltd <i>REC 6156</i> Electrical Contractors		
G					
F					
E	As installed	17/02/2010	PROJECT TITLE Residential Development, 109 Clarendon St, South Melbourne.		
D	After Stuart Cooks comments	12/08/2008	Designed By Ian Hoyle	Project No P4448	MSB
C	After supply auth comments	07/08/2008	Draw By Ian Hoyle	Drawing No P4448-4	Scale NTS
B	After consultants comments	20/06/2008	Checked By F O'Shannassy	Sheet No 4 OF 4	Rev E
A	Submit for approval	12/05/2008			